



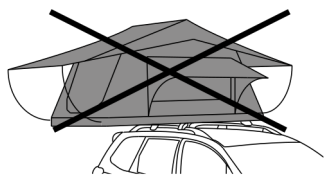
SUMMIT

SUP-036

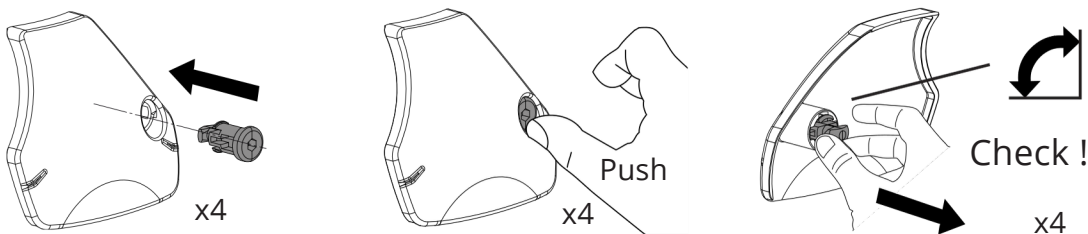
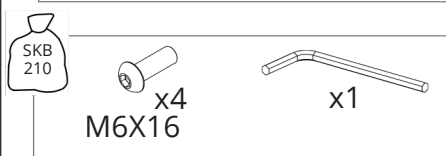
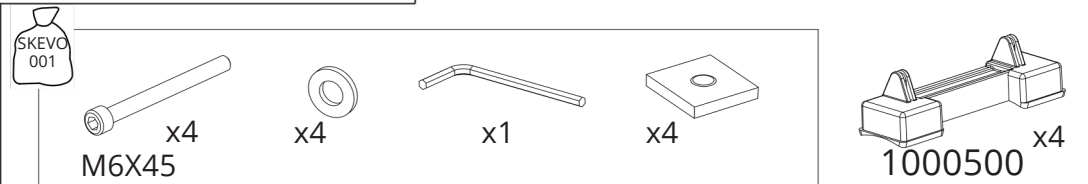
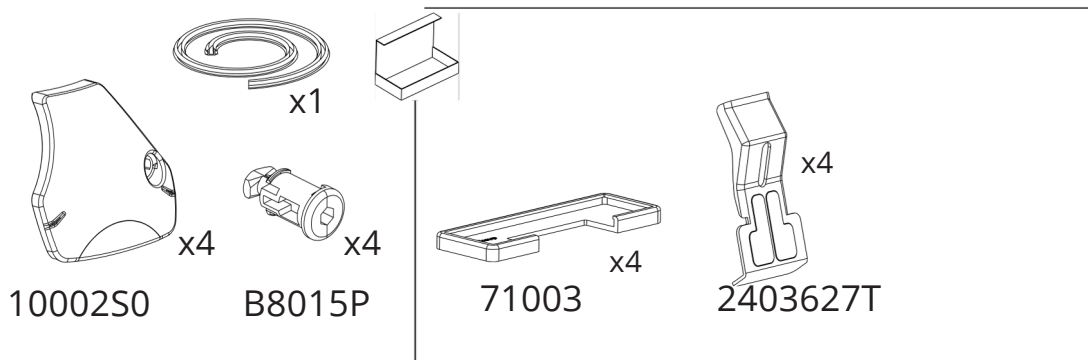


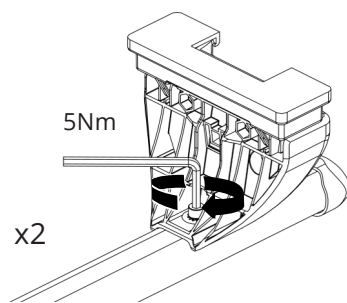
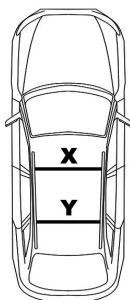
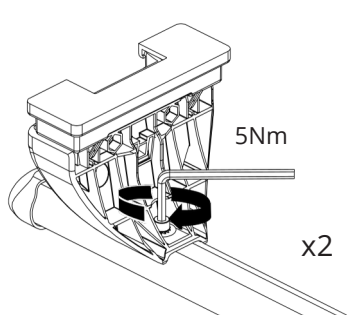
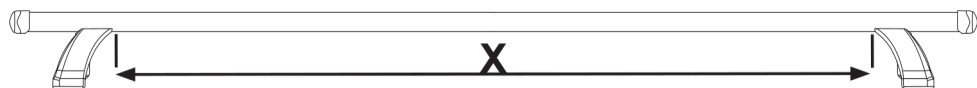
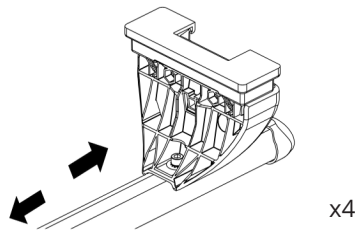
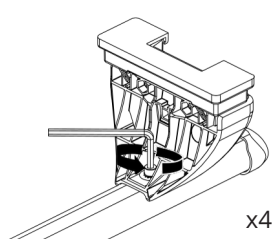
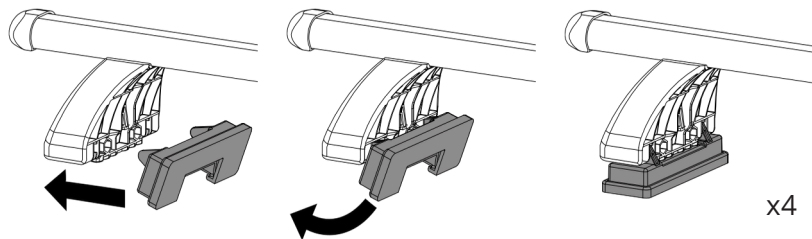
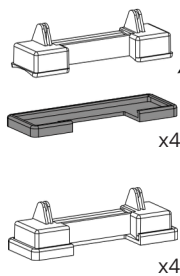
ROOF BAR
MAX WEIGHT
LOAD 75 KG

Brand & Model		
ALPINE A290	5	2024 ->
AUDI A3 Sportback (8P)	5	2004 -> 2012
AUDI Q5 Sportback	5	2021 ->
FORD Ecosport (no rails)	5	2012 -> 2023
FORD Fiesta VII	5	2018 -> 2024
HYUNDAI i10 (AC3)	5	2020 ->
HYUNDAI Ionic	4	2016 -> 2022
KIA Rio (UB)	5	2011 -> 2017
LEAPMOTOR T03	5	2020 ->
MINI Clubman (F54)	5	2015 -> 2024
RENAULT 5	5	2024 ->
SEAT Altea (5P)	5	2004 -> 2015
SEAT Leon II	5	2005 -> 2012
SEAT Mii (KF1) (1P)	5	2012 -> 2021
SEAT Toledo III (5P)	5	2004 -> 2009
SKODA Citigo	5	2012 -> 2020
SSANGYONG Tivoli	5	2015 -> 2023
TATA Indica	5	2010 -> 2017
TOYOTS Auris (E18)	5	2013 -> 2018
VOLKSWAGEN Golf Plus (1K)	5	2005 -> 2014
VOLKSWAGEN Golf V (1K)	5	2003 -> 2008
VOLKSWAGEN Golf VI (5K)	5	2008 -> 2012
VOLKSWAGEN Passat (B6)	5	2005 -> 2013
VOLKSWAGEN Polo IV (9N)	3	2001 -> 2009
VOLKSWAGEN Polo IV (9N)	5	2001 -> 2009
VOLKSWAGEN Polo V (6R)	5	2009 -> 2017
VOLKSWAGEN T-Cross (no rails)	5	2019 ->
VOLKSWAGEN Taigo	5	2022 ->
VOLKSWAGEN Tiguan (5N)	5	2007 -> 2016
VOLKSWAGEN UP	5	2012 ->



**We do not recommend the use of
rooftop tents with these roof bars**





You must follow the measurements indicated in this table for your vehicle. Failure to follow these measurements will result in incorrect fitment of your roof bars, which will invalidate your warranty.

BRAND	MODEL	YEAR	DOOR	X	Y	A	B
ALPINE	A290	2024 ->	5	105,5 cm	101,5 cm	25 cm	70 cm
AUDI	A3 Sportback	2004->2012	5	101 cm	97 cm	16,5 cm	68 cm
AUDI	Q5 Sportback	2021 ->	5	110,5 cm	112 cm	35 cm	70 cm
FORD	Ecosport	2012-> 2023	5	103,5 cm	103 cm	30 cm	70 cm
FORD	Fiesta	2018 ->2024	5	101 cm	99 cm	21 cm	65 cm
HYUNDAI	i10	2020 ->	5	103 cm	103 cm	27 cm	65 cm
HYUNDAI	Ionic	2016->2022	4	107 cm	110,5 cm	25 cm	70 cm
KIA	Rio	2011-> 2017	5	105 cm	103 cm	31 cm	64,5 cm
MINI	Clubman	2015 ->2024	5	110 cm	107 cm	10 cm	60 cm
LEAPMOTOR	T03	2020 ->	5	99,5 cm	101,5 cm	35 cm	70 cm
RENAULT	5	2024 ->	5	105,5 cm	101,5 cm	25 cm	70 cm
SEAT	Altea	2004-> 2015	5	102 cm	99,5 cm	31 cm	68,5 cm
SEAT	Leon II	2005-> 2012	5	106 cm	100 cm	30 cm	71 cm
SEAT	Mii	2012->2021	5	106,5 cm	104 cm	20 cm	70 cm
SEAT	Toledo III	2004->2009	5	102 cm	99,5 cm	31 cm	68,5 cm
SKODA	Citigo	2012->2020	5	106,5 cm	104 cm	20 cm	70 cm
SSANGYONG	Tivoli	2015 ->2023	5	105,5 cm	103,5 cm	20 cm	70 cm
TATA	Indica	2010->2017	5	103 cm	101,5 cm	20 cm	60 cm
TOYOTA	Auris II	2013->2018	5	102 cm	102 cm	32 cm	75 cm
VW	Golf Plus	2005-> 2014	5	103,5 cm	100,5 cm	37 cm	73 cm
VW	Golf V	2003->2008	5	104,5 cm	97,5 cm	30 cm	68 cm
VW	Golf VI	2008-> 2012	5	103,5 cm	97 cm	31,5 cm	71,5 cm
VW	Passat VI	2005-> 2013	4	106 cm	104,5 cm	27,5 cm	75 cm
VW	Polo IV	2001->2009	3	95 cm	93 cm	23,5 cm	76 cm
VW	Polo IV	2001->2009	5	95 cm	94,5 cm	23,5 cm	74 cm
VW	Polo V	2009->2017	5	101,5 cm	98 cm	30 cm	77 cm
VW	T-Cross	2019 ->	5	109 cm	108,5 cm	25 cm	70 cm
VW	Taigo	2022 ->	5	104 cm	97,5 cm	34 cm	70 cm
VW	Tiguan	2007-> 2016	5	111 Cm	108,5 Cm	32 cm	68,5 cm
VW	Up	2012->	5	106,5 Cm	104 Cm	20 cm	70 cm

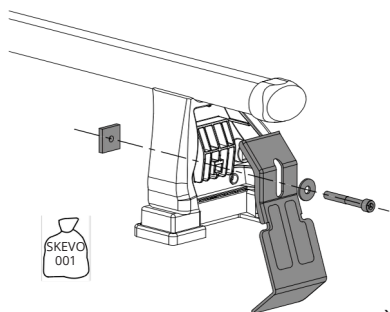
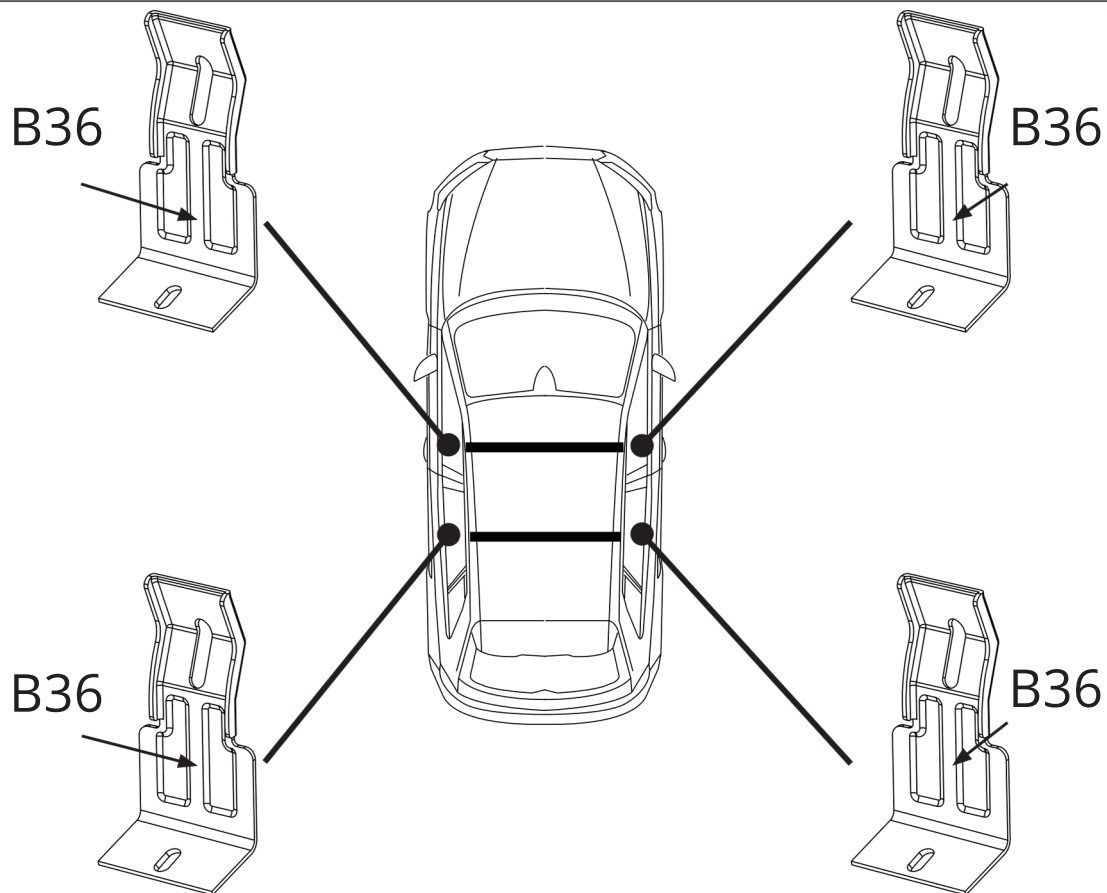
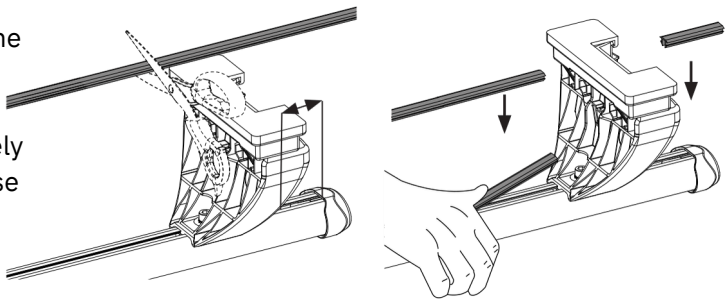
X measurement: Position of the feet on the front bar - you need the front of the feet to line up to this measurement.

Y measurement: Position of the feet on the rear bar - you need the front of the feet to line up to this measurement.

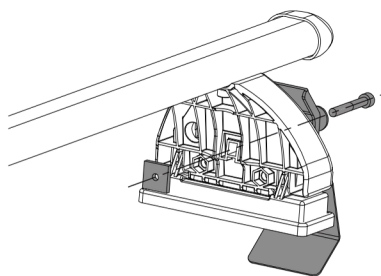
A measurement: Position of the front bar feet on the roof, measured from the centre of the A pillar to the centre of the roof bar foot.

B measurement: Position of the rear bar feet on the roof, measured from the centre of the front roof bar foot to the centre of the rear roof bar foot.

Measure the gaps around the feet and carefully cut the weather strip to size.
Tip: try to cut this as precisely as possible, to stop any noise from wind.

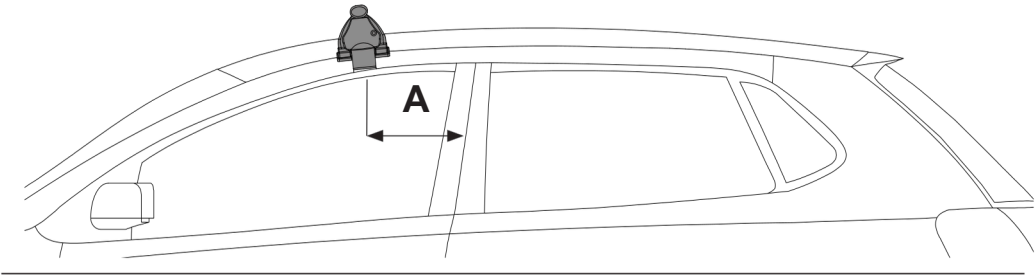


x4

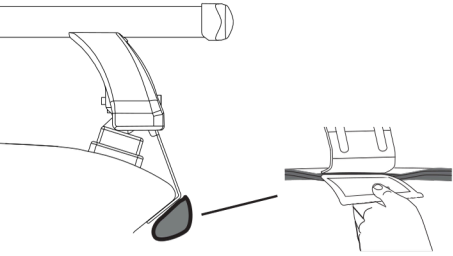


x4

Front bar: Measure from the middle of the A pillar to the centre of the roof bar foot.

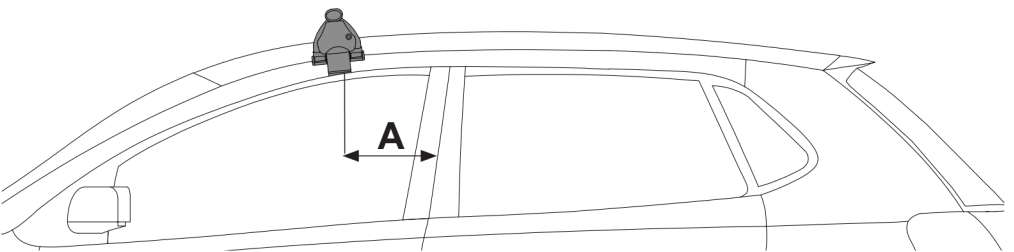
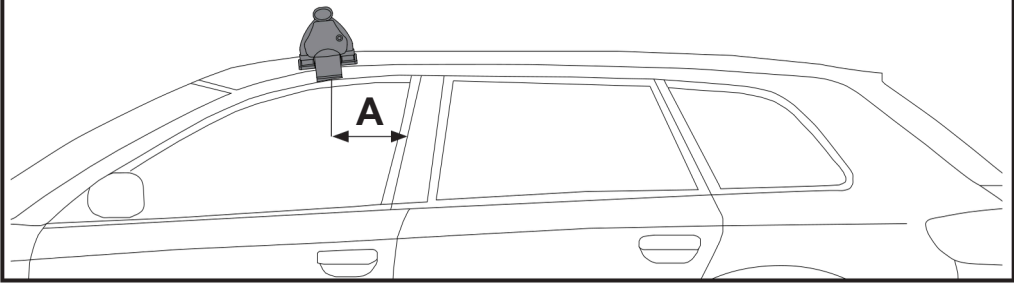


ONLY FOR : MINI Clubman



If listed, you must follow the specific step for your vehicle!

ONLY FOR ; AUDI A3 Sportback

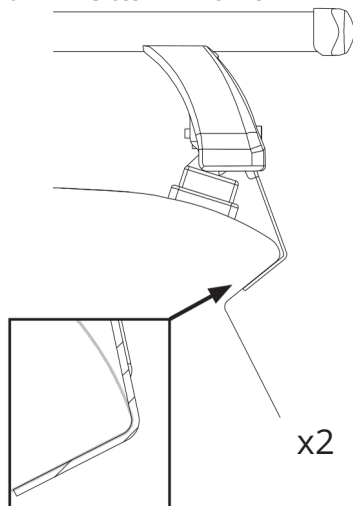
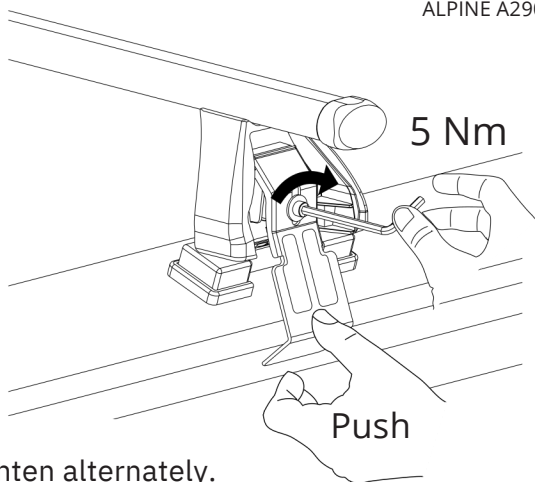


If listed, you must follow the specific step for your vehicle!



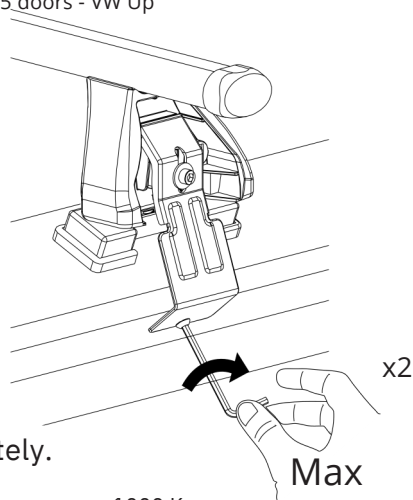
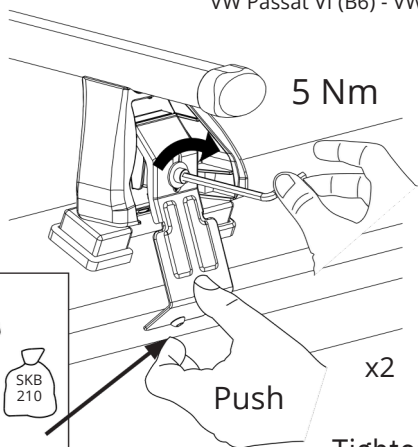
Do not use the screw for these vehicles

ONLY FOR : AUDI A3 Sportback - AUDI Q5 Sportback - FORD Fiesta - KIA Rio - LEAP MOTOR T03 - MINI Clubman - Ssanyong Tivoli - TATA Indica - TOYOTA Auris - VW Golf Plus (1K) - VW Polo (6R) - VW Taigo - VW Tiguan (5N) - HYUNDAI i10 (AC3) - HYUNDAI Ionic - FORD Ecosport - WV T-Cross - RENAULT 5 - ALPINE A290



Use the screw for these vehicles

ONLY FOR : SEAT Altea - SEAT Leon - SEAT Mii - SEAT Toledo - SKODA Citigo - VW Golf (1K) - VW Golf VI (5K) - VW Passat VI (B6) - VW Polo (9N) 3-5 doors - VW Up



10 Km

100 Km

500 Km

1000 Km

CHECK!



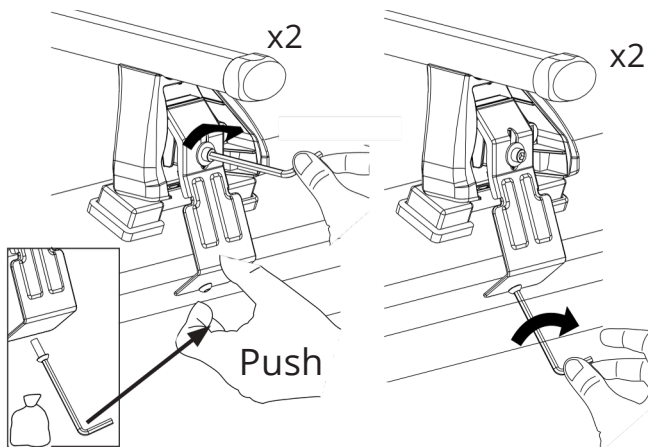
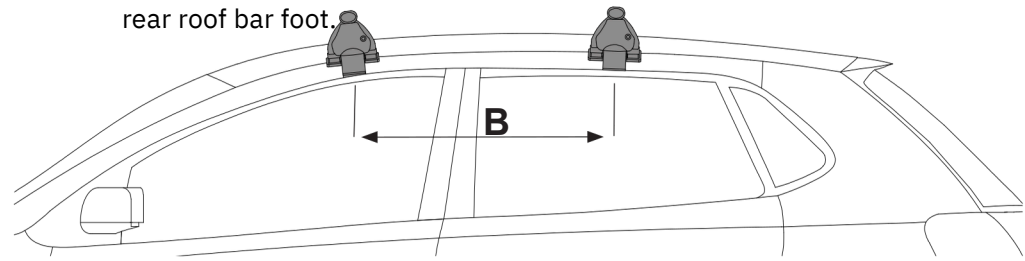
You must regularly check that your roof bars are secured to the correct Nm. We strongly recommend that you check & retighten your roof bars after the initial fitting, after adding & securing a load, before and during your journey.



For Volkswagen Passat (B6) only!



Rear bar: Measure from the centre of the front roof bar foot to the centre of the rear roof bar foot.



Tighten alternately.

10 Km

100 Km

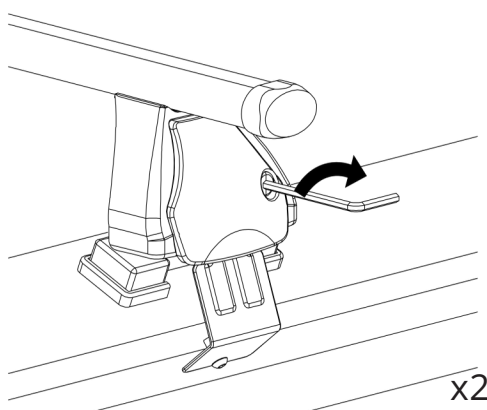
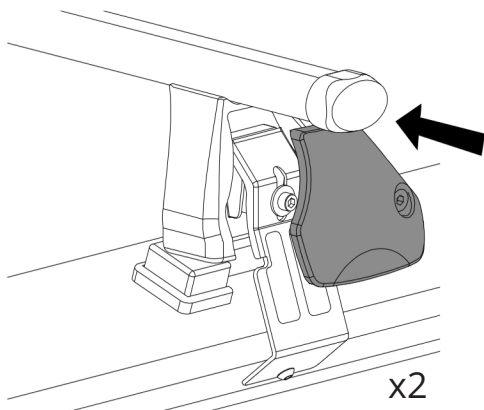
500 Km

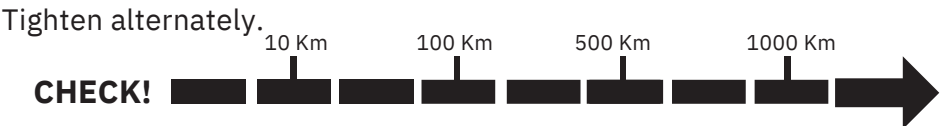
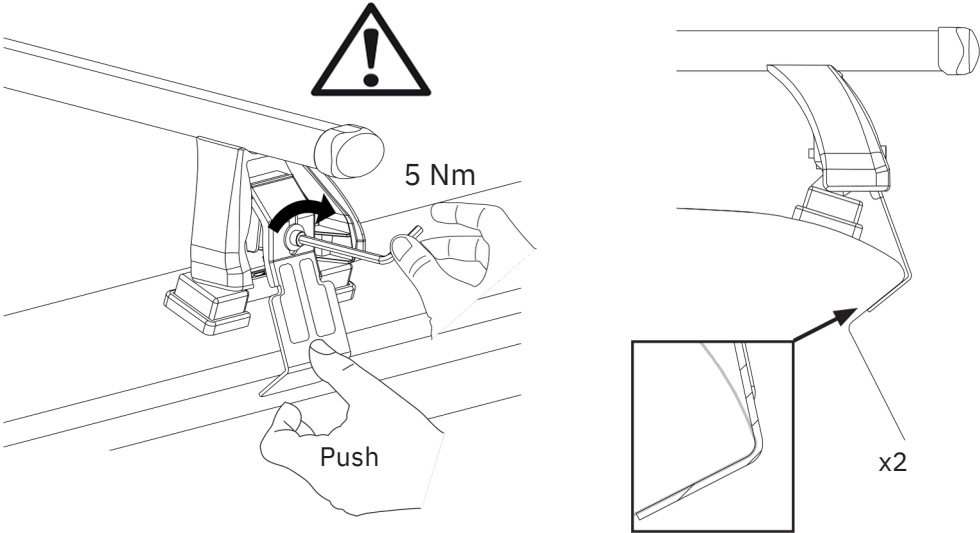
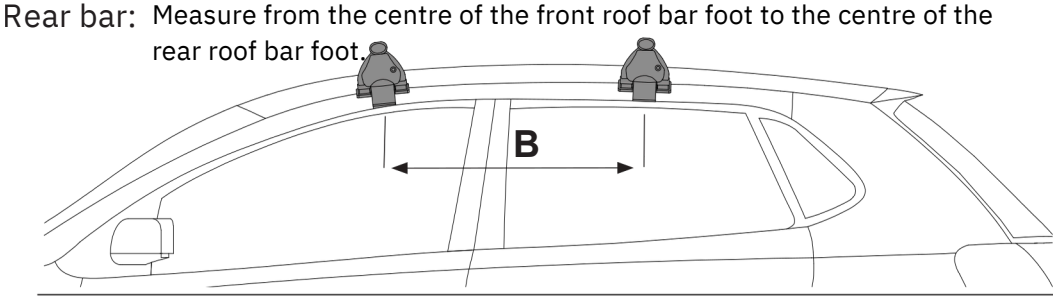
1000 Km

CHECK!

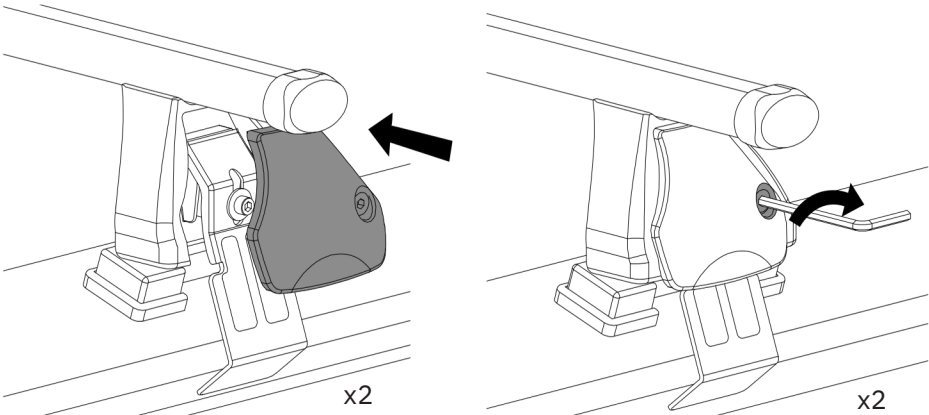


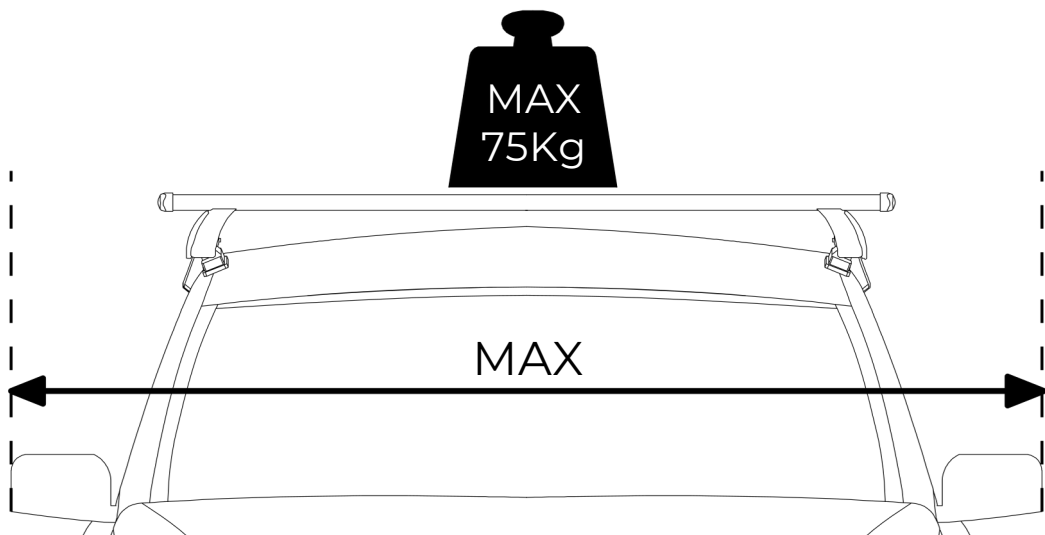
You must regularly check that your roof bars are secured to the correct Nm. We strongly recommend that you check & retighten your roof bars after the initial fitting, after adding & securing a load, before and during your journey.





You must regularly check that your roof bars are secured to the correct Nm. We strongly recommend that you check & retighten your roof bars after the initial fitting, after adding & securing a load, before and during your journey.



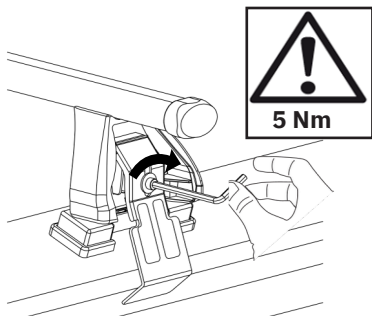
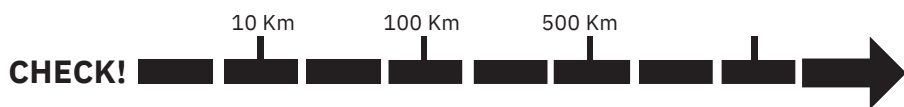
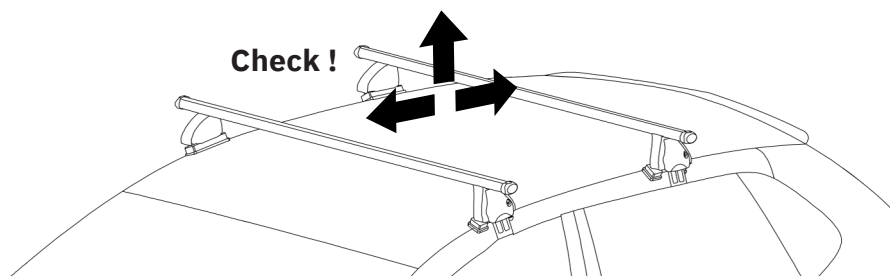


A diagram illustrating the calculation of the total weight on the roof rack. It shows two horizontal bars, each labeled "4 Kg", followed by a plus sign, a bag icon labeled "xx Kg", an equals sign, and the text "Max 75 kg".

$$4 \text{ Kg} + \text{xx Kg} = \text{Max 75 kg}$$



**Check your vehicle handbook for the maximum permitted load.
If the vehicle handbook states lower than 75kg, that must be
observed, if more than 75kg the roof bar maximum dynamic
weight must not be exceeded.**



You must regularly check that your roof bars are secured to the correct Nm. We strongly recommend that you check & retighten your roof bars after the initial fitting, after adding & securing a load, before and during your journey.

It is your responsibility to ensure that your roof bars & any roof load are correctly & securely fitted to your vehicle.

Installation Notes:

- Fit the roof bars according to these instructions only. Do not assemble or use this product unless you have understood the fitting instructions. Check that all the necessary parts are included.
- Check and make sure that all fastening parts are fixed securely. Please check also that the load is fastened properly by pushing and pulling it. Reread regularly as recommended in these instructions.

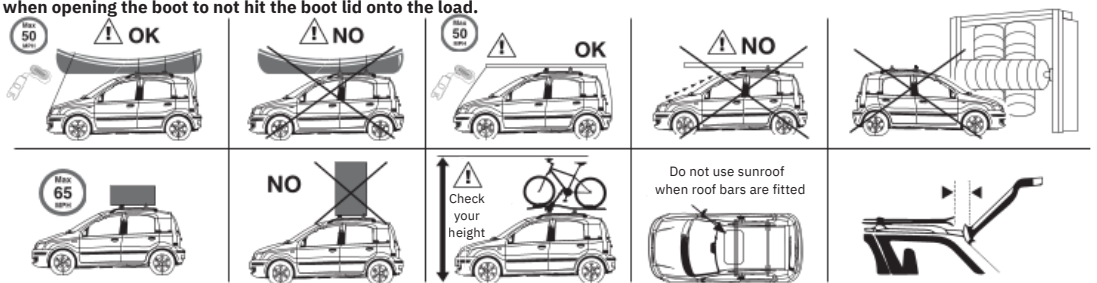
Important Safety Notes:

- Please retain these instructions future reference.
- The maximum dynamic load evenly distributed over the full width of the bar with a low centre of gravity is 75kg (including the weight of the bars; approx. 4kg). Check the vehicle handbook for the maximum permitted load. If the vehicle hand book states a maximum of less than 75kg, then that is the maximum permissible load. If the vehicle handbook states a maximum heavier than 75kg, the maximum dynamic load for these roof bars is still 75kg - and this must not be exceeded.
- It is your responsibility to ensure that all loads are correctly and safely secured using suitable fixing methods (e.g. strong webbing straps with buckles). Where specialised accessories are available, they should be used (e.g. Cycle Carriers, Ski Holders, etc). If small heavy loads are being carried, load to one side of the bar, not the middle. **Never attach any loads to any roof bars using bungee cords or elasticated straps.**
- Before driving and at regular intervals during your journey, check that all securing screws, clamping devices and foot attachments are fully tightened, in accordance with these instructions. Additionally ensure the load is fastened correctly. We recommend a short test drive immediately after fitting any loads, you must then check & if required retighten your roof bars & any load.
- After covering a short distance, all securing devices of both the load and the roof bars must be checked and tightened as required. This needs to be repeated at regular intervals as recommended in these instructions.
- To prevent damage or discolouration to the paint under the foot pack rubber, we recommend cleaning the roof bar feet and the vehicle roof prior to fitment. The roof bars should be removed when not in use.
- Neither the roof bars or the load should project beyond the maximum profile of the vehicle.
- Take care not to drive into low places such as garages or multi-storey car parks when carrying a high load, particularly cycles. Do not drive through an automatic car wash with the roof bars mounted on the vehicle. **When carrying long loads take care when opening the boot to not hit the boot lid onto the load.**

- Please note that some antennas can interfere with roof bars or loads when installed and should be removed, where possible.
- Sunroofs should not be used when roof bars are fitted.
- Follow the instructions thoroughly and do not jump ahead in the sequence (1,2,3, A,B,C... etc).
- **It is your responsibility to ensure that your roof bars & any loads are correctly & securely fitted to your vehicle.**

- Using the bars, especially when carrying a load, will affect the driving and braking characteristics of your car. Larger roof loads may also affect your car's sensitivity to cross winds. For safety reasons, the vehicle must not be driven at maximum speeds. Speed should be matched to the load being transported, to prevailing conditions including the state of the road, the quality of the road surface, the volume of traffic, etc., and of course any speed restrictions in force. We recommend a maximum speed of 65 mph, but the vehicle speed when transporting a load of any kind must be matched to the prevailing conditions.
- Surfboards, boats and large flat objects may produce damaging aerodynamic forces to the vehicle. We therefore recommend travelling at much reduced speed when carrying these articles. **Where two or more surfboards are carried (or similar items which may produce lifting forces) they should not be carried side by side, but should be stacked one upon the other. All long, flat objects should be secured independently to the front and rear of the vehicle using straps which are capable of withstanding the lifting forces - do not use bungee cords or elasticated straps.**
- **When carrying kayaks or canoes ensure that they are secured to the bars and also the front and rear of the vehicle in the upright position.**
- If you are using these roof bars during the winter months, they must be kept clean and properly maintained, all dirt and salt must be removed. Bolts, screws and nuts should be lubricated at regular intervals, the periodic use of a spray lubricant will keep any lock barrels working freely.
- Always fit the roof bars in accordance with these instructions. The spacing between the front and rear bars must never be less than 700 mm, except where the vehicle mountings determine the spacing. **IMPORTANT:** These roof bars are specifically designed for your car model. Please therefore check which roof bar is needed when changing your car. Do not use spare parts from other products.

The manufacturer takes no responsibility for damage caused by an incorrectly fitted roof bar.



Made in Italy by
Aurilis Group Italia SRL,
Via Torino 101 Fossano (CN) - Italy
On behalf of
Mountney Ltd
MXL Centre, 6 Lombard Way, Banbury, OX16 4TJ, UK
www.mountneyltd.com

EU Rep.
Authorised Rep Compliance Ltd., Ground
Floor, 71 Lower Baggot Street, Dublin,
D02 P593, Ireland.
www.arccompliance.com